

LOMBARDY'S HUMAN CAPITAL



invest in
Lombardy

POWERED BY



UNIONCAMERE
LOMBARDIA



Regione
Lombardia

INDEX

Why Lombardy

p. 3

Lombardy: Home to World-Class Universities

p. 7

Academies, institutes, schools of higher technical education

p. 12

Lombardy's labor market: a growing workforce

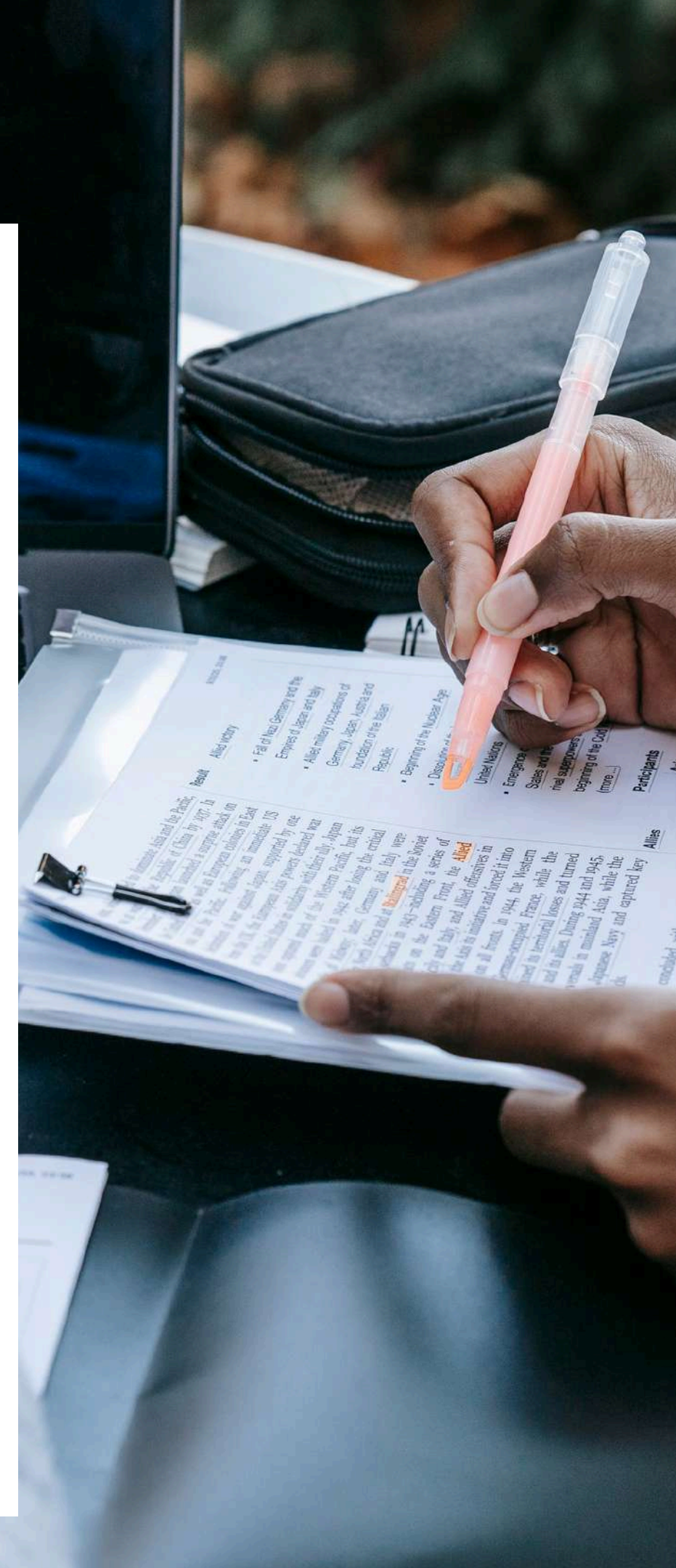
p. 16

Education and research at the service of businesses

p. 19

How Invest in Lombardy can help you

p. 24



The background of the slide features a close-up of two hands shaking in a firm grip, a common symbol for agreement or partnership. The hands are wearing dark suit sleeves. The entire image is overlaid with a semi-transparent dark teal filter.

WHY LOMBARDY

AT THE HEART OF EUROPE

Located in the **north of Italy**, at the heart of the most economically advanced European area, Lombardy is a **bridge to the Mediterranean Sea**



24,000 km² of surface area



10 mln inhabitants

- **1st** region in Italy
- **3rd** region in Europe



divided into **12 provinces** with **Milan** as the capital city



115 Consular offices

- **105** of which are in Milan



LOMBARDY IN A SNAPSHOT

AMONG THE TOP EUROPEAN REGIONS



- **2nd** EU Region for GDP
- **Among the 67** out of 240 European **Strong Innovator** Regions
- **1st industrial region** according to the NUTS2 classification

THE MOST ATTRACTIVE REGION IN ITALY:

FDI



- Almost **50%** of National FDI lands in Lombardy



1ST REGION FOR:



GDP

- **€ 483** billion
- **24%** of Italy's GDP



NUMBER OF COMPANIES

- About **815K** companies
- **4,5 million** employees
- **6,900** multinational companies



HUBS SUPPORTING INNOVATION

- **24%** of certified national incubators (**57** out of 237 in 2023)
- **18%** of national fablab

INFRASTRUCTURES & CONNECTIONS



1,920 km
of railway networks

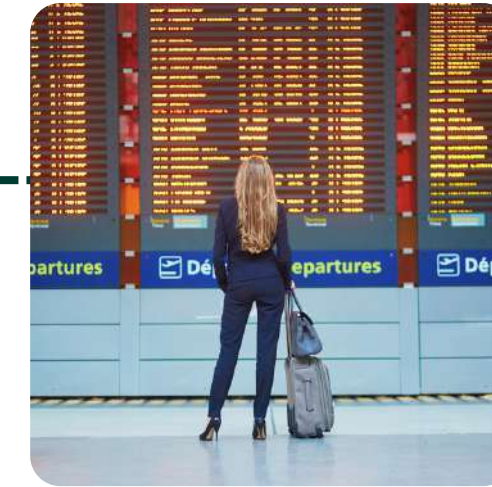
- 428 train stations



700 km
of highways



11,000 km
of provincial and
national roads



4 airports

- 25% of national passengers' traffic
- 70% of freight transport



10 h to Beijing



8 h to New York



6 h to Dubai



1h. 50 to London



1h. 30 to Paris

Lombardy offers a wide range of direct flights to the main European and global destinations

The background of the slide is a dark teal color. Overlaid on this is a faint, high-contrast image of two hands shaking in a firm grip. The hands are wearing dark suit sleeves with visible buttons. The text is centered over the image.

LOMBARDY: HOME TO WORLD-CLASS UNIVERSITIES

15 UNIVERSITIES

MULTIDISCIPLINARY



University of Milan



University of Bergamo



University of Insubria
Varese - Como



IUSS - Pavia
University Institute of Advanced Studies



University of Pavia



University of Brescia



Sacred Heart Catholic University



University of Milan Bicocca



University eCampus

WITH SPECIFIC DISCIPLINARY FOCUS



Humanitas University



Polytechnic of Milan



University Life Health S. Raffaele



University of Languages and Communication IULM



University Business "Luigi Bocconi"



University "Carlo Cattaneo" LIUC



UNIVERSITIES: MORE THAN 323,000 STUDENTS IN LOMBARDY

STEM courses
more than 84,000 students, including:

55,440

Engineering students
out of 292k in Italy

22,339

Natural sciences, mathematics,
and statistics students out of 160k
in Italy



Other:

60,304

Business, administration, and law
students out of 325k in Italy

34,009

Health and welfare students
out of 246k in Italy

THE INTERNATIONAL POSITIONING OF THE LOMBARDY UNIVERSITY SYSTEM

Polytechnic of Milan

University of Milan

Bocconi University

Architecture

 **7th** in the world

Veterinary Science

 **1st** in Italy


Marketing

 **7th** in the world

Mechanical Engineering

 **9th** in the world

Pharmacy and Pharmacology

 **1st** in Italy


Business and Management

 **9th** in the world

Engineering - Electrical and Electronic

 **18th** in the world

Overall universities ranked

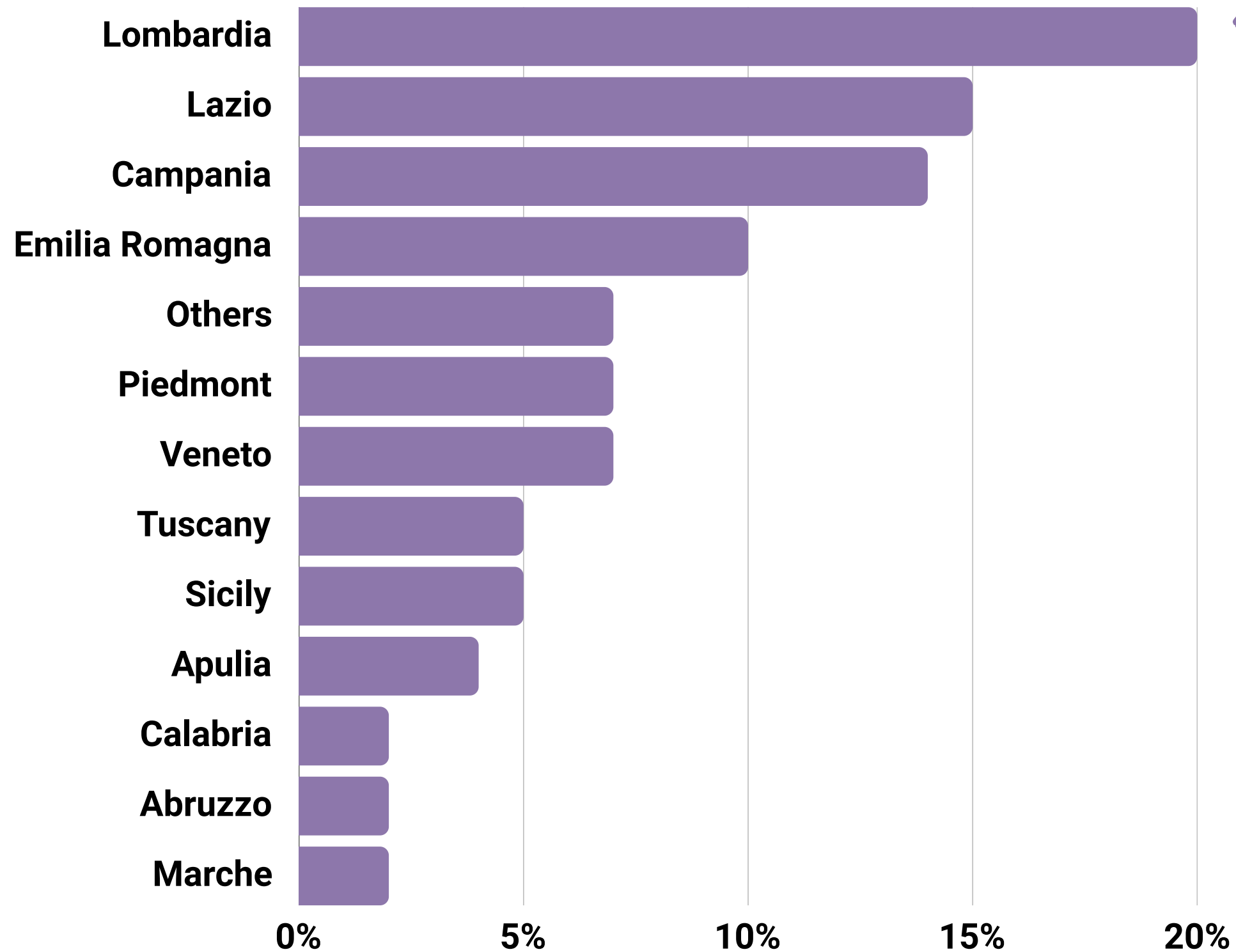
 **186th** in the world

Social Sciences and Management

 **16th** in the world

LEADING REGION FOR GRADUATES

Lombardy produces the largest number of college graduates in Italy



Lombardy 20%
(73,188 graduates
out of 366k in Italy)

1/5

Of the total number of college
graduates in Italy in 2021



75.4% of **bachelor's graduates** are already
employed one year after graduation

77.1% of **master's graduates** are already
employed five years after graduation

The employment rate increased by 0.9% for first-level
graduates and by 2.5% for second-level graduates



ACADEMIES, INSTITUTES, SCHOOLS OF HIGHER TECHNICAL EDUCATION

ABOUT 30 ACADEMIES AND INSTITUTIONS OF ART, CULTURE, ENTERTAINMENT, FASHION AND DESIGN

Some examples of excellence



International fashion school of excellence. Ranked 9th among the world's best fashion schools according to CEOworld magazine



Italy's largest private academy



International excellence working in the disciplines of Design, Fashion, Visual Arts and Communication



Leading school in the international style and design scene



Among the world's most influential institutions for training professionals working in the performing arts



Higher Education in Art and Music, awards 1st and 2nd level academic degrees



Among the most prestigious European institutions in music education



International excellence in training for actors and actresses



SCHOOLS OF HIGHER TECHNICAL EDUCATION

A BRIDGE BETWEEN SCHOOL AND WORK, CREATING SPECIALIZED PROFESSIONALS

ITS - Istituti Tecnici Superiori: 2 years post-diploma to acquire Technical Higher qualification (classified level V EQF*). 82% of graduates are employed



26
INSTITUTES



6266
ENROLLED
2023

6 TECHNOLOGICAL AREAS



ENERGY EFFICIENCY



NEW TECHNOLOGIES OF LIFE



ICT



TOURISM AND CULTURAL
HERITAGE



NEW TECHNOLOGIES FOR
MADE IN ITALY



SUSTAINABLE MOBILITY

IFTS - Istituti di Istruzione e Formazione Tecnica Superiore: 1 year (two semesters) with at least 30% dedicated to internships (classified level IV EQF*). 81% of graduates find jobs within 1 year



89
ACTIVE COURSES



1806
ENROLLED
2023

6 TECHNOLOGICAL AREAS



MANUFACTURING
AND HANDCRAFTS



TOURISM AND SPORT



MECHANICS



CULTURE AND
INFORMATION



CONSTRUCTION



BUSINESS SERVICES

*EQF: European Qualifications Framework based on learning outcomes divided into 8 levels, serves as a "translation" tool between different national qualifications frameworks

LOMBARDY LEADS IN TECHNOLOGICAL AND PROFESSIONAL EDUCATION INITIATIVES

Lombardy is the **first region in Italy** to implement the '**Technological-Professional Pathways 4+2**,' offering four-year high school programs with a strong vocational focus starting from the 2024-2025 academic year



Comprehensive Coverage:

- The program spans across **10** provinces
- **34** new educational pathways
- Includes collaborations with “ITS” Academies and technical institutes



Focus on Modern Skills:

- Developing skills in languages, digital skills, AI, workplace safety, and personal development



Future-Ready Education:

- In their final year, students will receive in-depth training to prepare for tertiary education or the evolving job market



LOMBARDY'S LABOR MARKET: A GROWING WORKFORCE

LOMBARDY LEADS THE WAY IN LABOR MARKET STRENGTH

ABOUT 4,52 MLN PEOPLE ARE EMPLOYED ON THE TERRITORY

Employment in Lombardy grew by **+1.2%** year-on-year, an increase in Q1 of 2024 of **53,000 over the previous year**. This represents the 12th year consecutive increase

+1.2%

In Q1 of 2024, the 15-64 y.o. **employment rate** stands at **69.1 %**, gaining 0.4 points compared to the previous year

69.1%

In Q1 2024, the **unemployment rate** stands at **4.3%**

4.3%



LOMBARDY'S LABOR MARKET: SOME KEY METRICS AND TRENDS

SUBORDINATE EMPLOYMENT

Subordinate employment accounts for more than **80%** of Lombardy's employment and has provided the main contribution to growth in recent years. It confirms the positive trend in the first quarter of 2024 as well, with a change of **+2.1%** (equal to +76K employed)

FEMALE EMPLOYMENT

Female employment growth (**+1.6%**) was higher than that of men (**+0.9%**). The female employment rate is **62%**, up 0.7 percentage points from the previous year, **narrowing the gender gap**





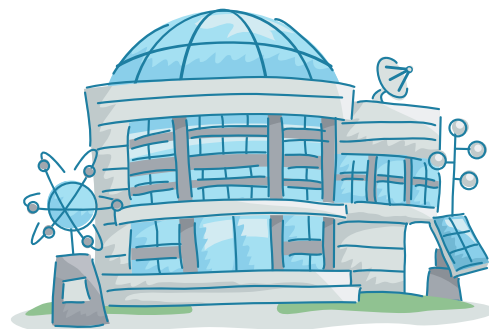
EDUCATION AND RESEARCH AT THE SERVICE OF BUSINESSES

THE STRONG LINK BETWEEN UNIVERSITIES, ENTERPRISES AND RESEARCH IN LOMBARDY



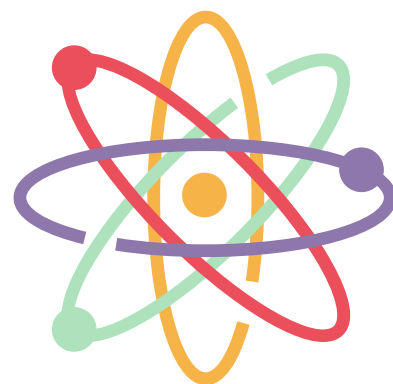
20

Institutions of **hospitalization and care** with scientific nature (IRCCs)



10

NRC Institutes HQs (30 branch offices)



3

Sections of the **National Institute of Nuclear Physics**

ON THE PODIUM OF EUROPE'S TOP RESEARCHERS

Italians are the **second-best** researchers in Europe as recognized by the **European Research Council (ERC)** 2023 awards

3

Scholarships for the **Politecnico di Milano** 2023



7

Scholarships for the **Bocconi University** 2023



LOMBARDY'S LEADERSHIP IN PATENT INNOVATION: NATIONAL BENCHMARK



1,626
Patent Applications filed with the
EPO in 2023



32.2%
of **National Total**, up from
previous years



TOP REGION

for Technological Density:

- **Lombardy**: 1,626 patents (**32.2%**)
- Emilia-Romagna: 958 patents (19%)
- Veneto: 680 patents (13.5%)



LOMBARDY'S LEADERSHIP IN PATENT INNOVATION: EUROPEAN BENCHMARK



Lombardy registered an increase of **+16.2%** in patent applications from 2015 to 2023



Baden-
Württemberg:

2.3% growth



Auvergne-
Rhône-Alpes:

8.2% growth



Cataluña:

45% growth, but
from a much
lower base

A HUB OF INNOVATION AND START-UP GROWTH

Lombardy is home to numerous innovation hubs that provide critical support to emerging businesses. The region also boasts a large number of **accelerators and incubators**, offering resources, mentorship, and funding opportunities

More than

100

Incubators, Accelerators and Innovation Hubs in Lombardy

SOME SUCCESSFUL CASES

PLUGANDPLAY

Fintech District



A low-angle, upward-looking photograph of a classical building facade, featuring large columns and a pediment with statues. The image is overlaid with a dark teal color and serves as the background for the text.

HOW INVEST IN LOMBARDY CAN HELP YOU

INVEST IN LOMBARDY: ONE-STOP-SHOP DEDICATED SERVICES



LOCATION SCOUTING

Find the best locations for your business through a dedicated network of local public institutions and private partners



NETWORKING

We are a business integrator, facilitating the connection with private and public, local and national stakeholders



BUSINESS INTELLIGENCE

Providing useful information on sectors/markets, supporting the evaluation of business opportunities in Lombardy



INCENTIVES

Overview of the tax incentives, grants, loans, and applicable bilateral conventions with institutions



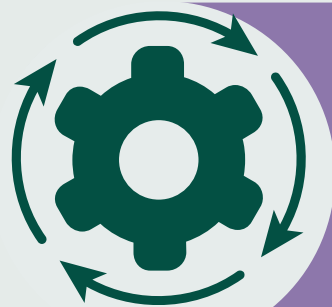
PUBLIC ADMINISTRATION

We facilitate the dialogue with the public administration & support you in dealing with administrative procedures



HUMAN RESOURCES

Assistance in choosing the most suitable staff recruitment channels for your business



START OF THE OPERATIONS

Tailor-made technical support for the set-up of a new business



EXPANSION & RELOCATION

General support to the expat workers in the relocation process

CONTACT US

FOR QUESTIONS, COMMENTS,
AND DEDICATED SUPPORT



WEB

www.investinlombardy.com



TEL

+ 39 02 8515 5220



EMAIL

info@investinlombardy.com