

# INCENTIVES LOMBARDY



invest in  
**Lombardy**

POWERED BY



UNIONCAMERE  
LOMBARDIA  
Camere di commercio lombarde



Regione  
Lombardia



# LOMBARDY'S ECONOMIC STRENGTH

## AMONG THE TOP EUROPEAN REGIONS



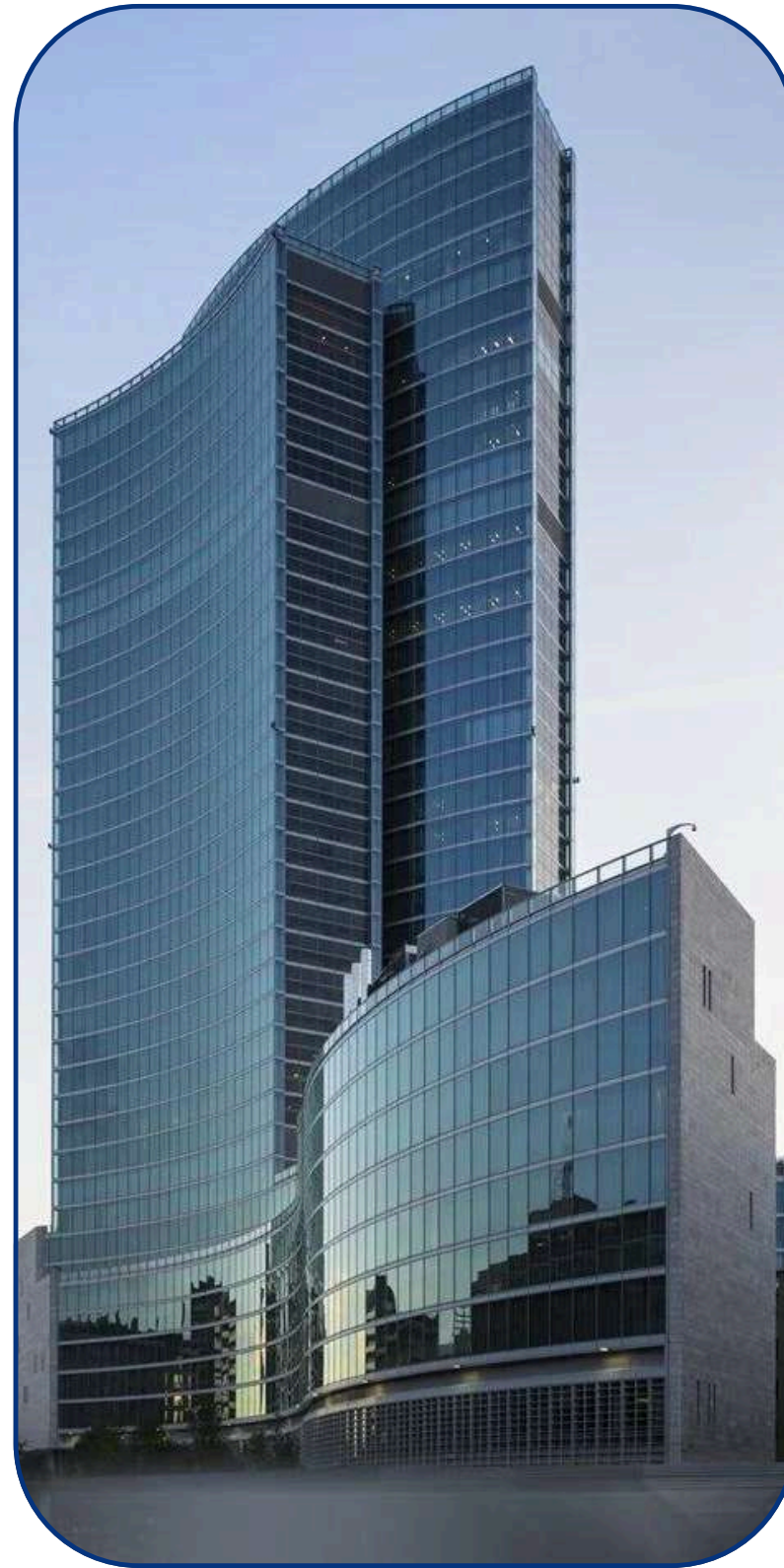
- **2nd** EU Region for GDP
- **Among the 67** out of 240 European **Strong Innovator** Regions

## THE MOST ATTRACTIVE REGION IN ITALY:

### FDI



- **€ 11** bln from 2012 to date)
- **24,7 %** of 44.4 bln € Italy's FDI



## 1ST REGION FOR:



### GDP

- **€ 384** billion
- **23%** of Italy's GDP



## NUMBER OF COMPANIES

- About **816K** companies
- **6,300** multinational companies
- **4,2 MLN** employees



## HUBS SUPPORTING INNOVATION

- **26%** of certified national incubators
- **18%** of national fablab

# INFRASTRUCTURES & CONNECTIONS



**1,920 km**

of railway networks

- 428 train stations



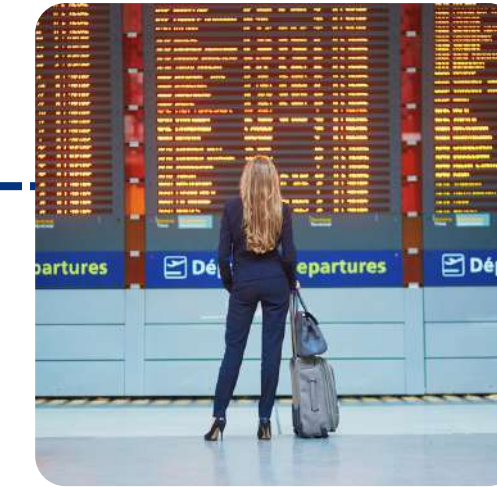
**700 km**

of highways



**11,000 km**

of provincial roads



**4**

international airports

- 25% of national passengers' traffic
- 70% of freight transport



10 h to Beijing



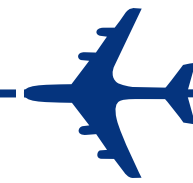
8 h to New York



6 h to Dubai



1h. 50 to London



1h. 30 to Paris

Lombardy offers a wide range of direct flights to the main European and global destinations



# Regional Incentives and Benefits





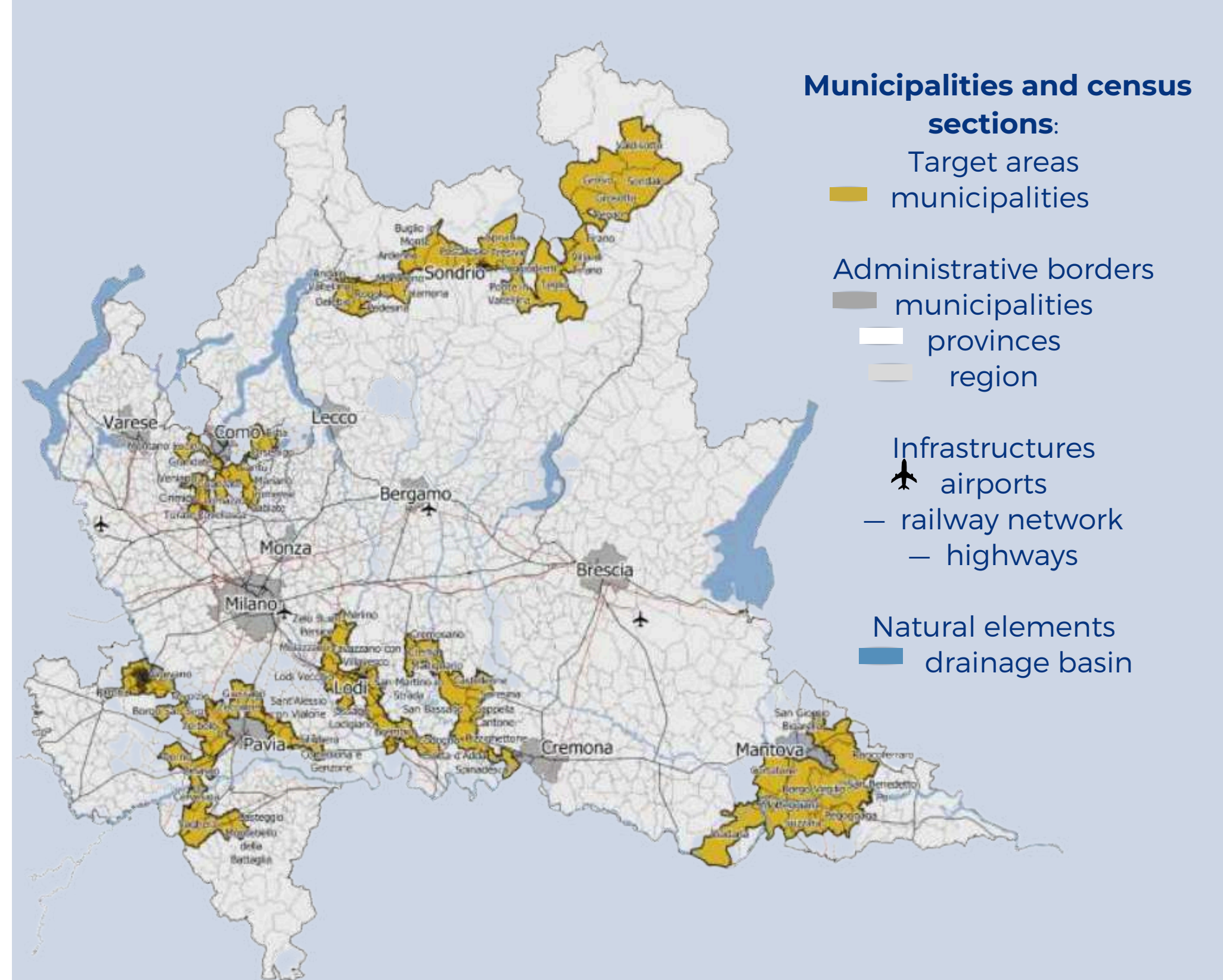
# Regional aid map 2022-2027



The European Commission approved the 2021-2027 Italy's Regional State Aid Map, with Decision C (2021) 8655 final, dated 2nd December 2021, concerning Case S.A. 100380 (2021/N).

The aim is to enable member states to help some of Europe's regions catch up and **reduce disparities in economic well-being, income, and unemployment.**

For **Lombardy Region**, those aids apply to some municipalities in different provinces such as the province of **Pavia**, the province of **Lodi**, the province of **Como**, the province of **Sondrio**, the province of **Mantua**, and the province of **Cremona** in different percentages.



For more information please visit: [www.regione.lombardia.it/wps/portal/istituzionale/HP/istituzione/regione/aiuti-di-stato](http://www.regione.lombardia.it/wps/portal/istituzionale/HP/istituzione/regione/aiuti-di-stato)

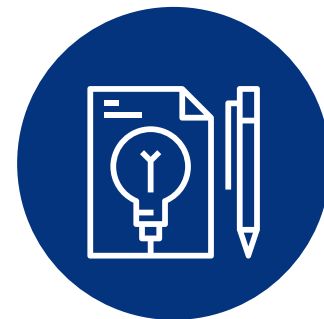
# Investment Package

## 1.Green Line



### Beneficiaries

- SMEs and large enterprises** possessing the following requirements:
- active businesses enrolled in the Trade Register with at least two filed financial statements;
  - headquartered in Lombardy Region at the time the facility is provided;
  - with ratings from 1 to 10 according to the Credit Guarantee Fund rating



### Eligible projects

Call for investments dedicated to **energy efficiency, adjustment and/or renovation of production plants.**

- The facility consists of:
1. **non refundable grants**
  2. **regional security for the loan**

The minimum investment amount is **€ 100K**  
the maximum allowable amount is divided as follows:

- **€ 10 MLN** (applications by 31 December, 2023)
- **€ 3 MLN** (applications after 31 December, 2023)

Projects should bring about a reduction of at least **30%** of greenhouse gas emissions compared with emission permits ex ante relating to the specific location of the Project



### Eligible expenditure

- Acquisition and installation of:**
1. machinery, production facilities, equipment and hardware;
  2. renewable energy production facilities;
  3. thermal and cooling energy and cogeneration/trigeneration plants



### Financial envelope

- € 65 MLN :**
- **€ 31 MLN** on R.P. ERDF 2021-2027 resources (Security)
  - **€ 34 MLN** on R.P. ERDF 2021-2027 resources (Grant)



# Investment Package

## 2. Business development line



### Beneficiaries

**SMEs and Midcap** possessing the following requirements:

- active businesses enrolled in the Trade Register with at least two filed financial statements;
- headquartered in Lombardy Region at the time the facility is provided;
- with ratings from 1 to 10 according to the Credit Guarantee Fund rating



### Eligible projects

Call for investments in **business development plans** aimed at **modernization and production expansion**.

The facility consists of:

1. **non refundable grants**
2. **regional security for the loan**

**Two areas of intervention:**

**Area 1:** SMEs and MidCaps with operational headquarters in Lombardy;

**Area 2:** SMEs and MidCaps with operational headquarters located in areas targeted for regional aid (as listed in Annex 1, available online).

The minimum investment amount is **€ 100K**  
the maximum eligible amount is **€ 3 MLN**



### Eligible expenditure

**Acquisition and installation of:**

1. machinery, production facilities, equipment, hardware and furniture;
2. software and user licenses; costs for cloud and saas type software services;
3. trademarks, patents and production licenses;
4. masonry, remediation and plant works\*

\*if related to the installation of the goods under item 1 and within the limit of 20% of this expenditure item



### Financial envelope

**€ 115 MLN :**

- **€ 69 MLN** on R.P. ERDF 2021-2027 resources (Security)
- **€ 46 MLN** on R.P. ERDF 2021-2027 resources (Grant)



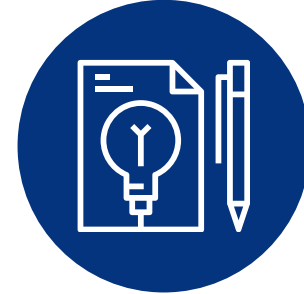


# Collabora & Innova



## Beneficiaries

- **Partnerships:** SMEs, large enterprises, research organizations (public/private, universities, research institutes, IRCCS)
- **Composition:** 3-8 entities, including at least 1 SME and 1 research organization.



## Eligible projects

Eligible projects must involve **complex industrial research and experimental development activities** that significantly enhance Lombardy's research and innovation ecosystems

The minimum investment amount is **€ 3.5 million**

These projects should be of high added value and relevance, promoting substantial advancements in research and innovation.



## Eligible expenditure

The financial support covers a percentage of the eligible expenses for the approved projects:

- **Small Enterprises:** 60% of eligible expenses
- **Medium Enterprises:** 50% of eligible expenses
- **Large Enterprises and Research Organizations:** 40% of eligible expenses



## Financial envelope

- **Total Funding:** **€100 million (expandable)**
- **Maximum Grant per Partnership:** **€5 million.**





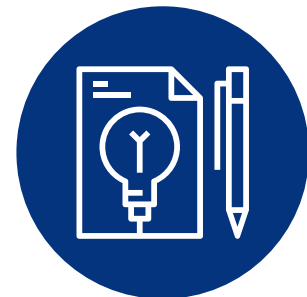
# Digital Transition



## Beneficiaries

### SMEs possessing the following requirements:

- active businesses enrolled in the Trade Register with at least two filed financial statements;
- headquartered in Lombardy
- actively involved in initiatives aimed at enhancing their digital capabilities and competitiveness.



## Eligible projects

Projects eligible for funding must focus on the **digital transformation of business processes**. This includes initiatives such as implementing advanced digital technologies, developing new digital products and services, and adopting innovative digital business models.

Projects must have a minimum investment of **€25,000** to be considered for funding.



## Eligible expenditure

Eligible expenses under this program cover a broad range of costs associated with digital transformation. These include:

- expenses for purchasing digital equipment and software
- consulting and training services, and
- any other costs directly related to the implementation of digital projects.



## Financial envelope

The subsidy consists of a non-repayable grant awarded and disbursed up to **50% of eligible expenses**.

The maximum subsidy that can be granted cannot exceed the amount of **€100,000**.



# Skills for green and digital innovation of Lombardy enterprises

A key action under the Lombardy Region Training Skills Partnership Agreement in the frame of the Pact for Skills launched by the European Commission.

The facility consists of a training voucher that enables beneficiaries to participate in the **training courses** listed in the section **"Skills line for industrial transition and business sustainability"**.

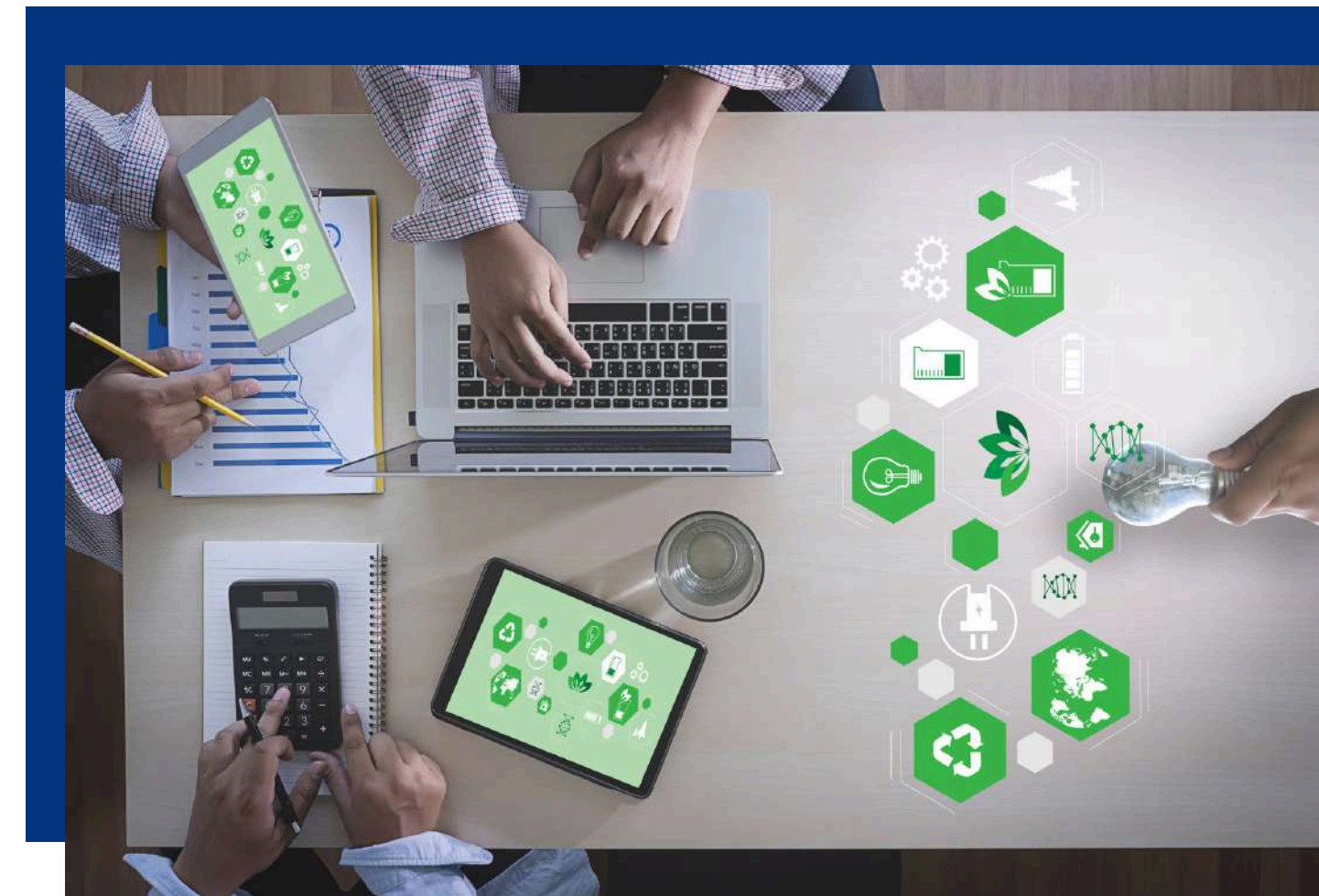
The facility is intended to complement the development of investments in innovation supported by other regional facilities under the RP ERDF, with the aim to strengthen the strategic skills (digital and green) related to the **Twin Transition**.

Beneficiaries are companies eligible under ERDF actions, including the Green Line and the Business Development Line. Final recipients are listed below:

- owners and members of **micro, small and medium-sized enterprises**;
- **employees and the self-employed**.

The voucher has a maximum value of **€4,000** per year per individual worker/freelancer for each year.

Each company will have a **maximum amount of € 12,000** expendable on an annual basis.





# Train to hire

The incentive is aimed at companies with **production units/operating headquarters in the Lombardy Region** that hire people who have been out of work for at least **30 days**.

The hiring incentive is bound to completion of a training course.

The amount of the incentive differs according to the following criteria:

- males up to the age of 54: **€ 4,000**
- females up to the age of 54: **€ 6,000**
- males aged 55 and over: **€ 6,000**
- females aged 55 and over: **€ 8,000**

For apprenticeship contracts, the amount of the incentive differs as follows:

- males up to the age of 29: **€ 1,500**
- females up to the age of 29: **€ 2,500**
- males aged 30 and over: **€ 4,000**
- females aged 30 and over: **€ 7,000**

Employers with **less than 50 employees** can benefit from an additional amount of **€ 1,000**



# INVEST IN LOMBARDY: ONE-STOP-SHOP DEDICATED SERVICES



## LOCATION SCOUTING

Find the best locations for your business through a dedicated network of local public institutions and private partners



## NETWORKING

We are a business integrator, facilitating the connection with private and public, local and national stakeholders



## BUSINESS INTELLIGENCE

Providing useful information on sectors/markets, supporting the evaluation of business opportunities in Lombardy



## INCENTIVES

Overview of the tax incentives, grants, loans, and applicable bilateral conventions with institutions



## PUBLIC ADMINISTRATION

We facilitate the dialogue with the public administration & support you in dealing with administrative procedures



## HUMAN RESOURCES

Assistance in choosing the most suitable staff recruitment channels for your business



## START OF THE OPERATIONS

Tailor-made technical support for the set-up of a new business



## EXPANSION & RELOCATION

General support to the expat workers in the relocation process



# CONTACT US

FOR QUESTIONS, COMMENTS,  
AND DEDICATED SUPPORT

---



**WEB**

**[www.investinlombardy.com](http://www.investinlombardy.com)**



**TEL**

**+ 39 02 8515 5220**



**EMAIL**

**[info@investinlombardy.com](mailto:info@investinlombardy.com)**